

SIGNA™ Sprint with Freelenium™

Designed to be purposefully helium-free* without compromising performance



GE HealthCare

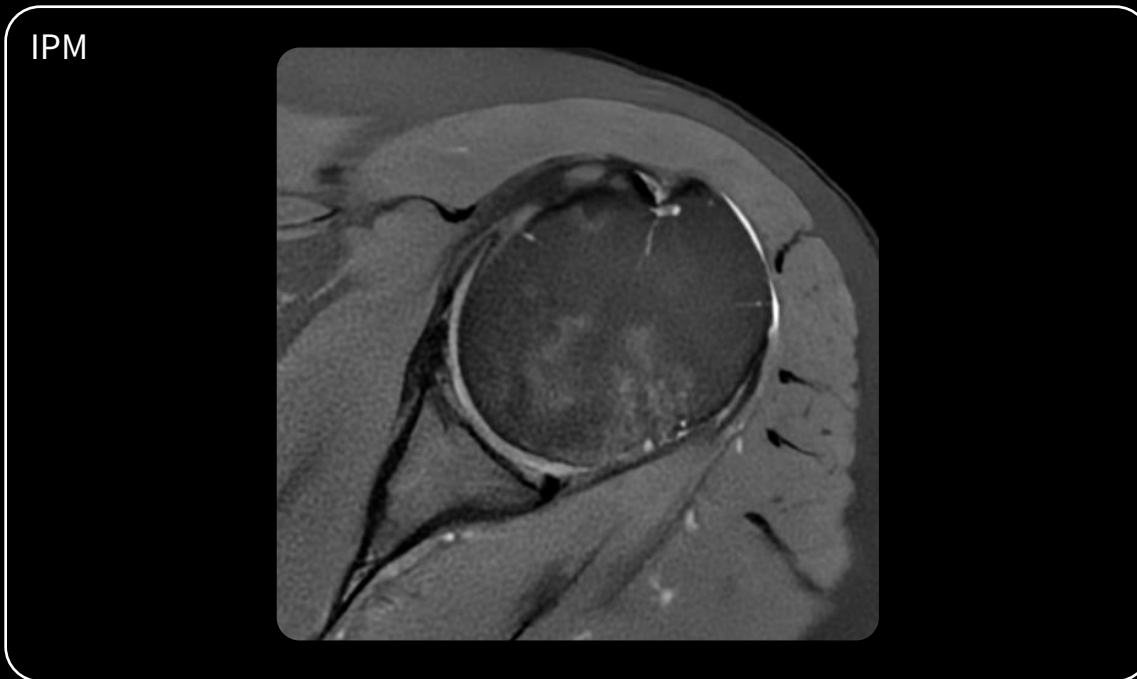
SIGNA™ Sprint with Freelenium™ is a configuration of SIGNA™ Sprint Select. 510(k) pending at US FDA. Not CE marked. Not available for sale.

*Helium permanently sealed in the magnet

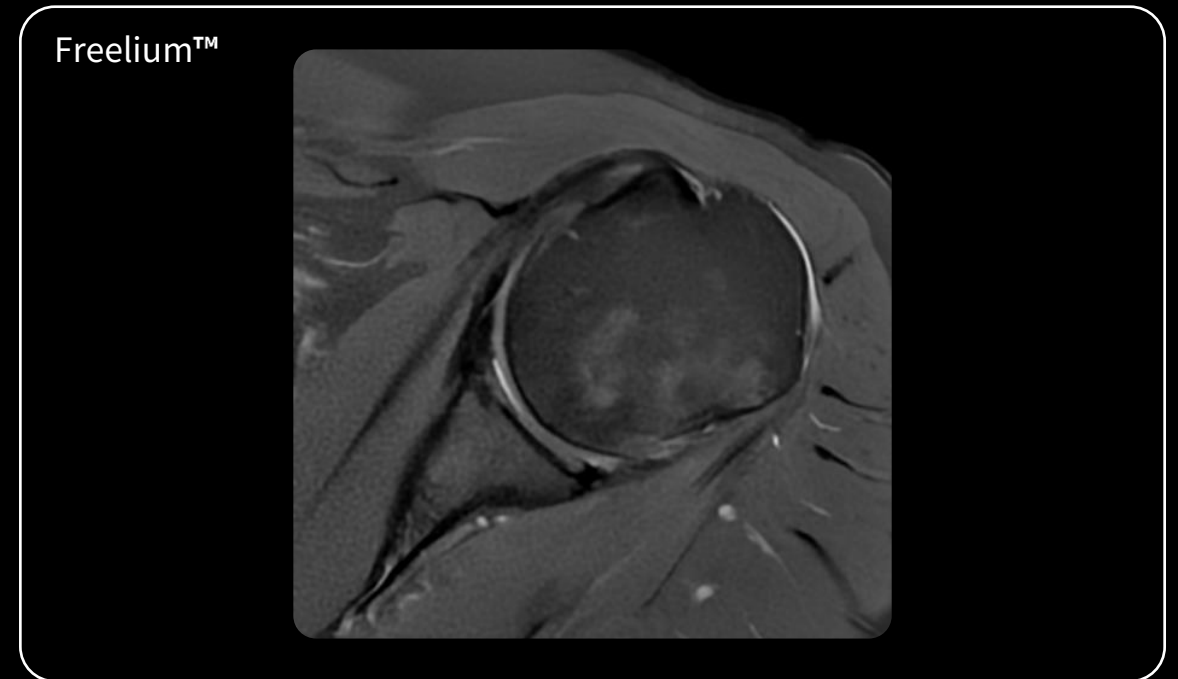
SIGNA™ Sprint with Freelenium™ | Shoulder

Homogeneity designed for high SNR and consistent clarity

◆ Design goals ◆



Ax PD FS prop | 0.5 x 0.5 x 3mm | 02:02 min



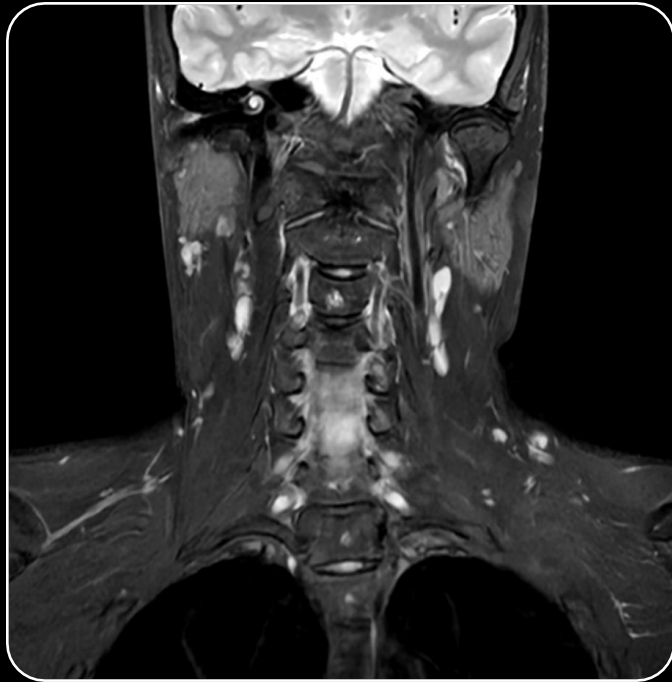
Ax PD FS prop | 0.5 x 0.5 x 3mm | 02:02 min

Designed to support diagnostic confidence with exceptional sealed magnet homogeneity

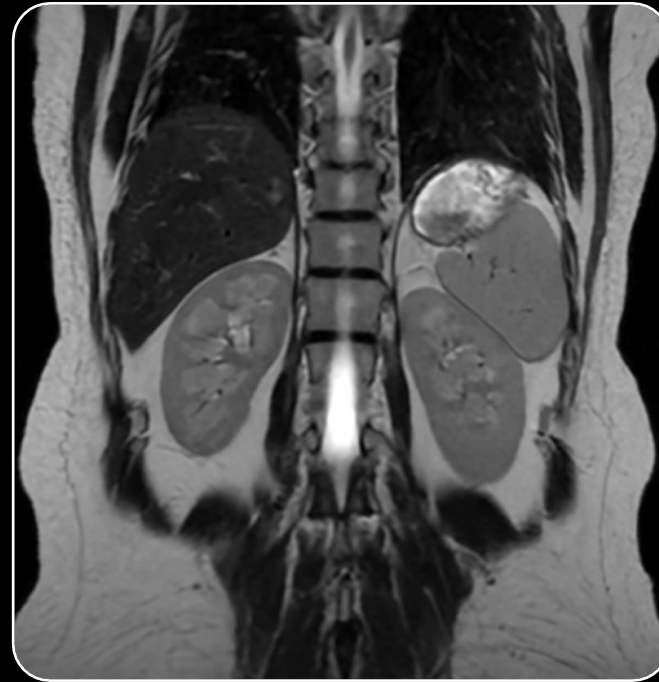
SIGNA™ Sprint with Freelim™

Homogeneity designed for high SNR and consistent clarity

◆ Design goals ◆



Cor T2 Water
0.9 x 1.1 x 4mm



Cor T2 SSFSE
1.5 x 2 x 4mm



Cor 3D FGRE FS
0.5 x 0.5 x 0.5 mm



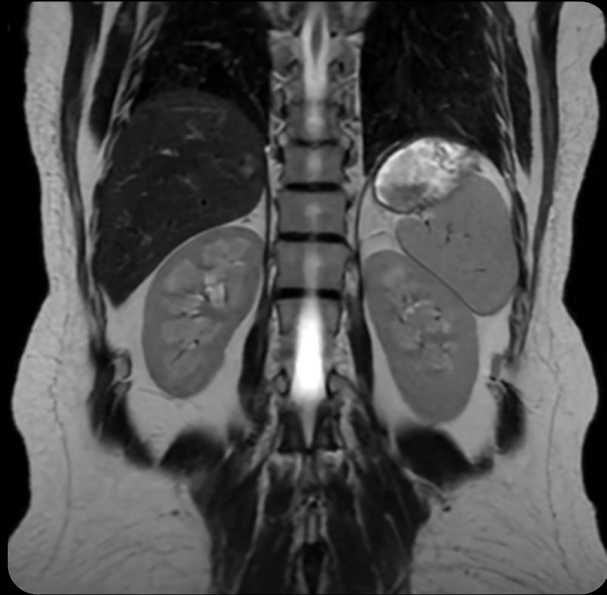
Cor T1 FSE
0.7 x 0.8 x 4mm

Designed to support diagnostic confidence with exceptional sealed magnet homogeneity

SIGNA™ Sprint with Freelenium™ | Abdomen

◆ Design goals ◆

Homogeneity designed for high SNR and consistent clarity



Cor T2 SSFSE | 1.5 x 2 x 4mm | 00:12 min

Contrast-free MRA



3D Enhance-IFIR | 1.2 x 1.2 x 1.2mm | 04:56 min

Designed to support diagnostic confidence with exceptional sealed magnet homogeneity

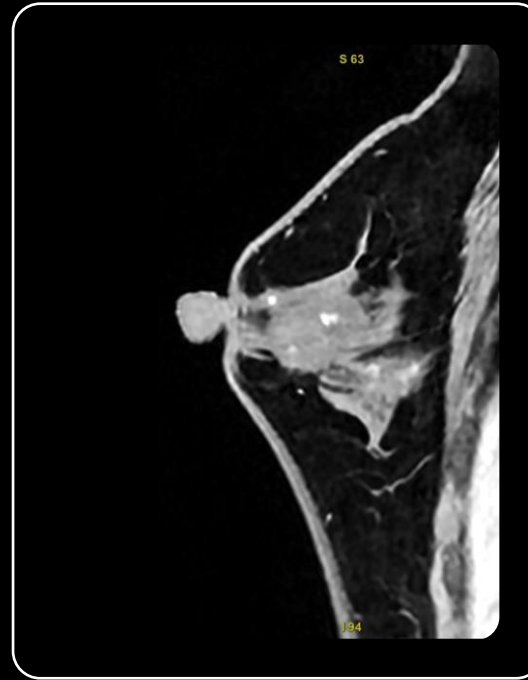
SIGNA™ Sprint with Freelenium™ | Breast

Homogeneity designed for high SNR and consistent clarity

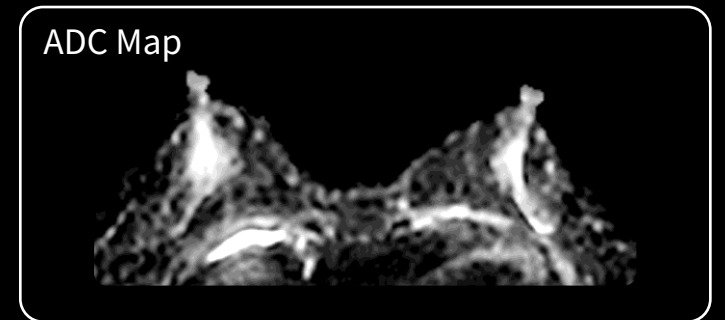
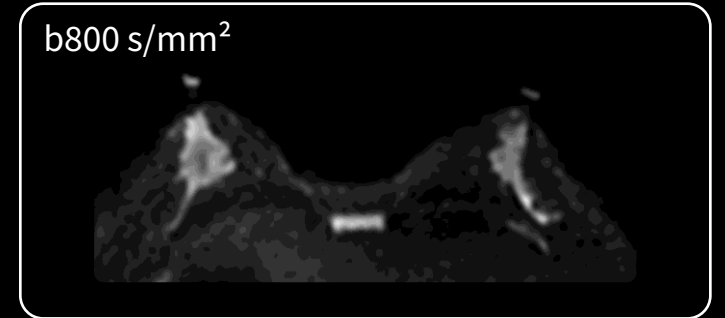
◆ Design goals ◆



Ax Vibrant Flex | 0.8 x 0.8 x 0.8mm | 1:49 min



Sag Vibrant Flex | 1 x 1 x 1.2 mm | 2:41 min



Ax DWI Focus | 3.2 x 3.2 x 4mm | 05:44 min

SIGNA™ Sprint with Freelim™ | Lumbar Spine

Homogeneity designed for high SNR and consistent clarity

◆ Design goals ◆



Sag T2 FSE | 0.6 x 1 x 4mm | 01:34 min



Sag T1 FSE | 1 x 1 x 4mm | 01:38 min



Ax T2 FSE | 0.6 x 0.6 x 4mm | 01:10 min

SIGNA™ Sprint with Freelim™ | Shoulder

Homogeneity designed for high SNR and consistent clarity

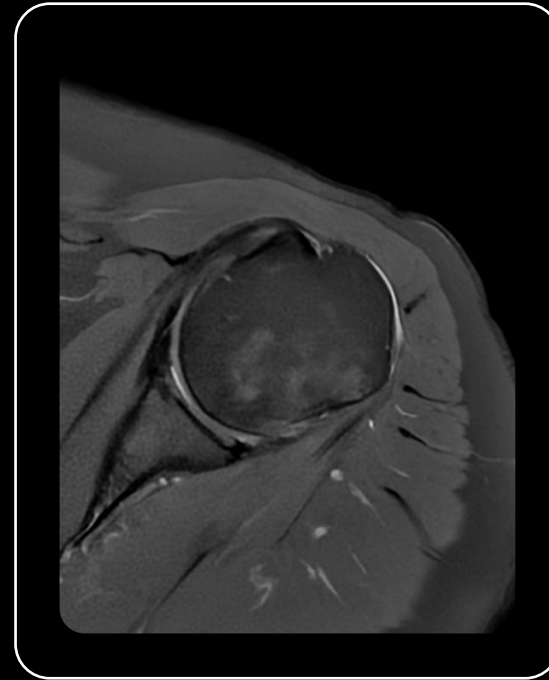
◆ Design goals ◆



Cor PD FS prop | 0.5 x 0.5 x 3mm | 03:02 min



Cor T1 Prop | 0.5 x 0.5 x 3mm | 02:28 min



Ax PD FS prop | 0.5 x 0.5 x 3mm | 02:02 min



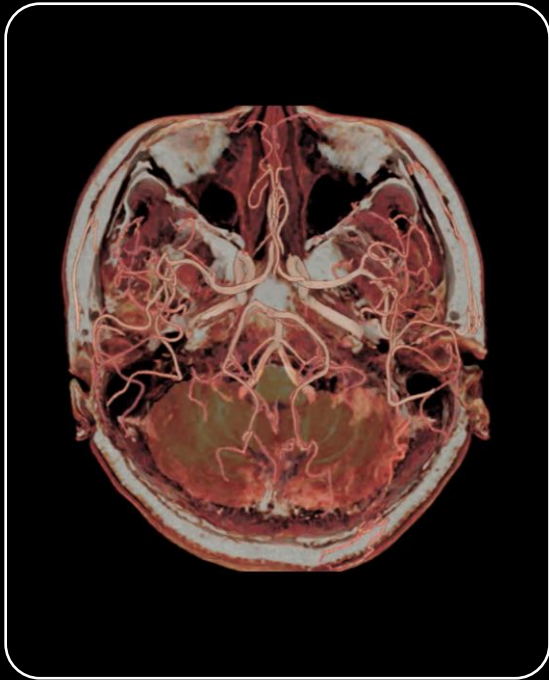
Ax T2 prop | 0.5 x 0.5 x 3mm | 01:54 min

100% Propeller protocol: engineered to reduce susceptibility motion without compromising contrast or spatial resolution

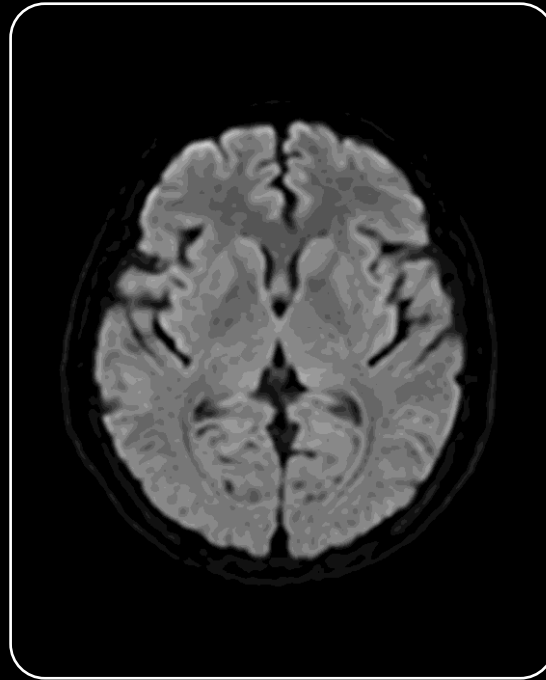
SIGNA™ Sprint with Freelenium™ | Brain

Homogeneity designed for high SNR and consistent clarity

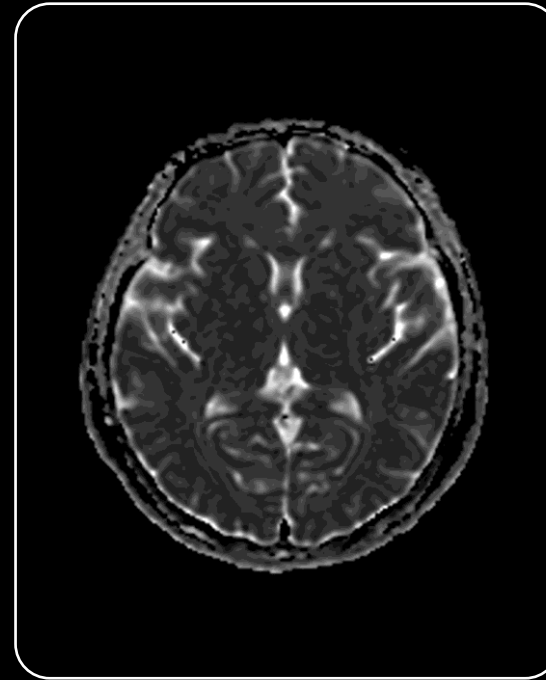
◆ Design goals ◆



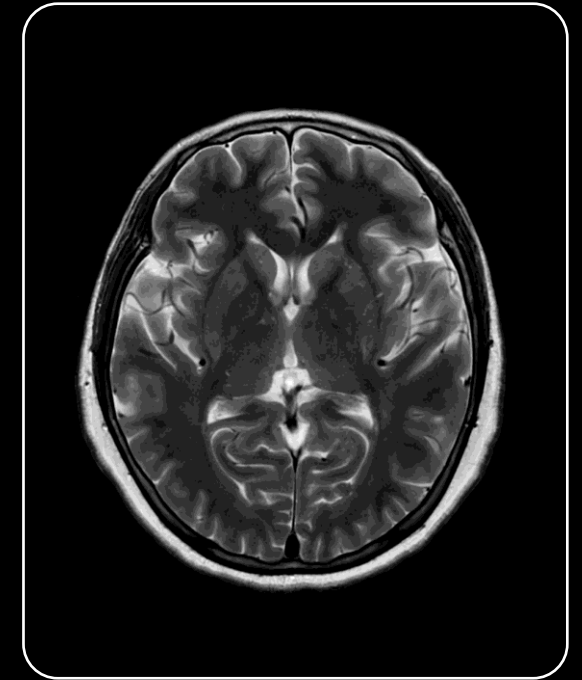
MIP 3D TOF | 0.7 x 0.7 x 0.7mm | 04:54 min



Ax DWI b1000 s/mm² | 2 x 1.5 x 4mm | 01:08 min



ADC Map



Ax T2 Prop | 0.5 x 0.5 x 4mm | 01:49 min

Designed to be purposefully helium-free* without compromising performance

*Helium permanently sealed in the magnet



GE HealthCare