

Elevate readers' experience with deep learning reconstruction in 3D mammography

When it comes to evaluating a mammography system, image quality comes first. Enhancing IQ brings greater confidence, comfort, and efficiency to technologists and radiologists—ultimately benefiting the patient.

By harnessing the power of AI, Pristina Recon DL¹ pushes 3D mammography past limits, delivering images with greater purity. A paradigm shift born from GE HealthCare's pioneering AIR Recon DL, it operates a dual DL technology that **reveals fine details, minimizing artifacts and perceived noise**^{2,3}.

And it does it all without increasing the dose.

Pristina Recon DL

**The power to detect.
The confidence to decide.**

1. Pristina Recon DL is an optional AI-based reconstruction solution of Senographe Pristina 3D.
2. Reader performance evaluation on 19 680 reads with 8 readers using modeled clinical data comparing Pristina Recon DL and ASIR V1.
3. Preference study performed on 140 study cases with 8 MQSA-approved radiologists, trained on clinical image quality by ACR, comparing Pristina Recon DL to ASIR V1.



Elevate readers' experience with deep learning reconstruction in 3D mammography

Detection



Superior performance

In the detection of **microcalcification clusters** and **masses** in a trial with modeled clinical data¹

Image quality



99%

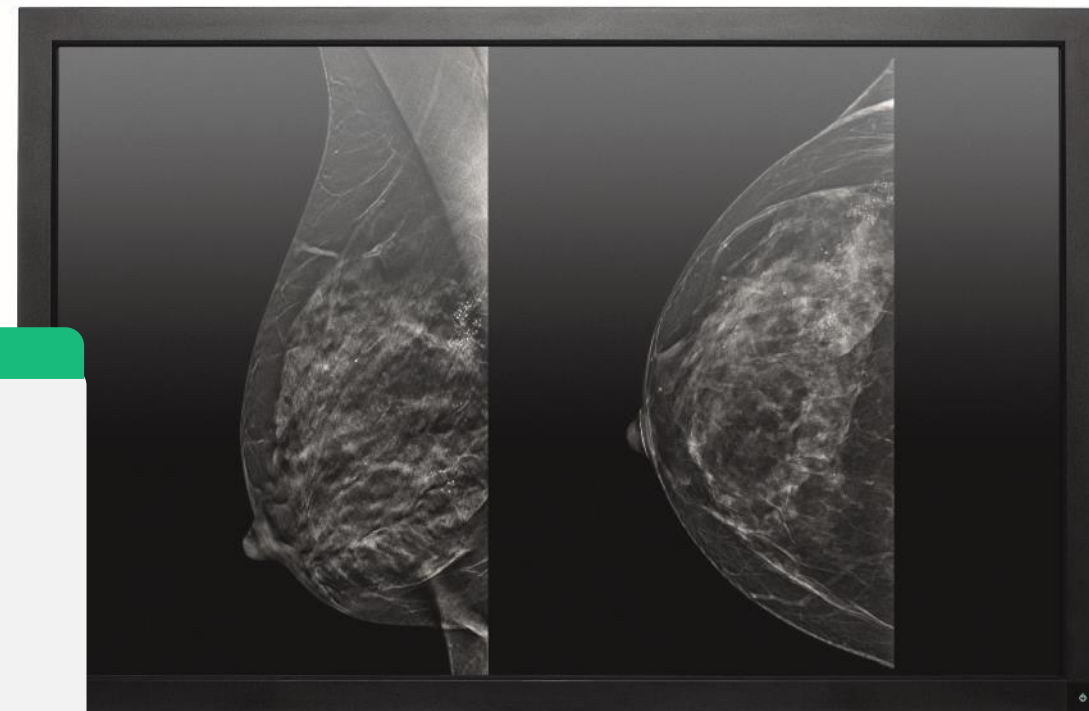
Overall **IQ was preferred** in more than 99% of the image evaluations²

Sharpness



99%

Sharpness was preferred in more than 99% of the image evaluations across the entire DBT set²



1. Reader performance evaluation on 19 680 reads with 8 readers using modeled clinical data comparing Pristina Recon DL and ASIR V1.
2. Preference study performed on 140 study cases with 8 MQSA-approved radiologists, trained on clinical image quality by ACR, comparing Pristina Recon DL to ASIR V1.