

What's in this release?

Venue™ family R6 updates



Now everywhere is point of care*



What's new on the Venue family



Innovations designed to enhance clinical accuracy and efficiency for POCUS

Whether you are new to POCUS or an experienced POCUS user, the newest Venue family features will bring you more. These new AI and clinical tools are designed to help increase your confidence and optimize workflow during procedures.



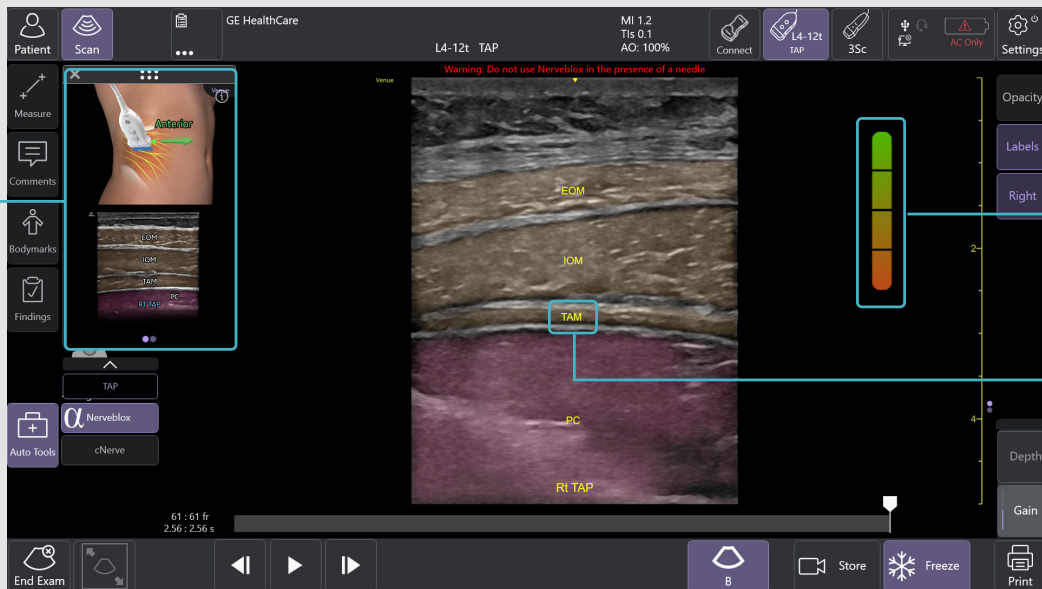
From block to periop, the Venue family has tools to help clinicians feel more confident

Confidently perform ultrasound-guided peripheral nerve blocks with Nerveblox

Nerveblox™ has joined the Venue family. Standard for Venue and Venue Go, this AI-enabled tool automatically labels key anatomical landmarks in the ultrasound image, helping clinicians feel confident during the procedure and streamlining the workflow with the goal of reducing procedure time.



Reference image



Quality meter

Real-time anatomy labels

Nerveblox by the numbers¹

97%

Achieved anatomical structure identification (mean) accuracy across all blocks and structures.



Image quality score showed substantial agreement with expert assessments.

95.3%

Image quality assessment accuracy. Agreement between AI and experts on image quality suitability.

Gastric measurements made easy

This easy-to-use decision support and measurement tool helps clinicians calculate the gastric cross-sectional area, volume and the volume-to-weight ratio, simply and quickly.



Reduce clicks, save time with Auto Bladder Volume

This AI-enabled tool provides rapid and easy urinary bladder volume measurements, saving clinicians valuable time and enhancing clinical accuracy. It measures bladder dimensions and calculates the bladder volume from two views: transverse and longitudinal.

- Reduced exam clicks from 18 clicks to five² dramatically improving workflow options
- 90% success rate³ with user accepting the automatic caliper placement nine out of ten times



New advanced tools to support POCUS users in more complex or advanced POCUS exams



Evaluate conditions at the bedside with Contrast-Enhanced Ultrasound

Bring capabilities directly where you need them with Contrast-Enhanced Ultrasound¹ (CEUS). Now clinicians can evaluate a variety of conditions such as abdominal solid organ injuries, lacerations, hematomas, lesions and tumors at the bedside. This dynamic imaging tool also supports cardiac assessment of the LVEF, regional wall motion and structural abnormalities.



Quickly and easily assess structural heart defects with AFI

POCUS users can now assess systolic function using Automated Function Imaging (AFI), with objective quantitative analysis of the complete longitudinal myocardial strain of the left ventricle, right ventricle and left atrium throughout the heart cycle.

After obtaining the specific images needed, the AFI measurement tool takes less than three minutes.⁴

Based on proven speckle tracking technology from other GE HealthCare ultrasound systems, this tool leverages similar workflows, helping users easily navigate and operate the tool without extensive retraining.

AFI is available on Venue and Venue Go.



New probe presets

Now available in the latest release.

Preset	Probe
Aesthetic/Neck	12L-RS
Aesthetic/Nail	L4-12t-RS
Aesthetic/Face	L12n-RS [^]
	L10-22-RS
	L4-20t-RS
	L8-18i-RS
	Vscan Air™ SL
	Vscan Air CL
Lung/Lung	C2-9-RS
Lung/Cons/Eff	
Nerve	Vscan Air CL

[^] Only available for Venue.



Work smarter with ViewPoint™ 6 on the Venue family



This Venue family release includes the latest ViewPoint 6 ultrasound reporting software to streamline your workflow.

Workflow improvements

- **Work faster with Direct Send**
Direct Send functionality allows clinicians to finalize reports directly on Venue family systems. On-board reports can also be reviewed and updated directly on your Venue family systems for added efficiency.
- **Take ViewPoint 6 reporting further**
Bring excellence and efficiency to your Venue ultrasound workflow with the latest reporting capabilities. Users now have the ability to configure ViewPoint 6 templates for Venue on-board reporting.

IT improvements

- **Enhanced security and easier installation** with no more shared folders
- **Fortified password policies**, including configurable and non-configurable options
- **Secured DICOM® communication through TLS Encryption**
 - Encrypted transfer of DICOM data at each stage to prevent unauthorized data access
 - TLS encryption is enabled by default, ensuring secure transfer of images and measurements
 - Separate configuration for PACS communication

1. Nerveblox Fact Sheet from Smart Alfa Teknoloji San. ve Tic. A.S JB34387XX
2. GE HealthCare internal study DOC3139738.
3. GE HealthCare internal study DOC3138602.
4. External clinical review JB16411XX.

* Venue family is intended to be used in hospitals and medical clinics. Venue Sprint is intended to be used in home environments and road/air ambulance, in addition.

† Available on Venue, Venue Go and Venue Fit. These systems are designed for compatibility with commercially available ultrasound contrast agents. Because the availability of these agents is subject to government regulation and approval, system features intended for use with these agents may not be commercially marketed nor made available before the contrast agent is cleared for use. Contrast-related system features are enabled only on systems for delivery to an authorized country or region of use.

Products mentioned in the material may be subject to government regulations and may not be available in all countries. Shipment and effective sale can only occur after approval from the regulator. Please check with your local GE HealthCare representative for details.

© 2025 GE HealthCare. Venue Sprint, Venue Fit, Venue Go, Venue, Vscan Air, and ViewPoint are trademarks of GE HealthCare. GE is a trademark of General Electric Company used under trademark license. NerveBlox is a trademark of Smart Alfa Teknoloji San. ve Tic. A.S., DICOM is a registered trademark of the National Electrical Manufacturers Association.

August 2025 JB34352XX



GE HealthCare