

History of mammography

1895



Wilhelm Röntgen discovers X-Ray

A year after, GE HealthCare co-founder Elihu Thomson modifies Thomas Edison's light bulb to emit X-rays and uses it to build the first X-Ray machine.

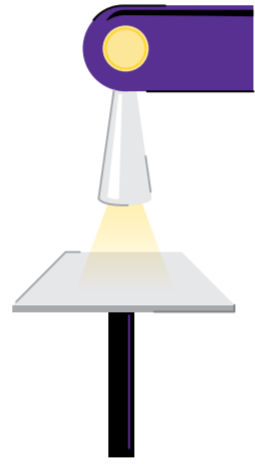
1913



1st attempt to identify breast cancer using X-rays

By German Surgeon Albert Salomon. He recognizes the importance of breast compression for improving image quality.

1949



1st breast compression technique

Developed by Uruguayan radiologist Raul Leborgne for dedicated breast radiography.

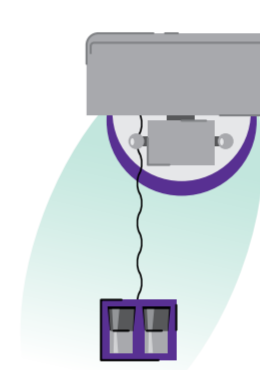
1966



Introduction of a dedicated X-Ray system: Senographe™

French radiologist Pr. Charles Gros asks the Paris-based Compagnie Générale de Radiologie (CGR) in 1965 to investigate a solution to improve mammography. A year after, CGR launches its first breast-dedicated X-Ray imaging equipment.

1976-1980



Modern mammography is in development

The launch of Senographe 500T is a key step in terms of ergonomics and image quality.

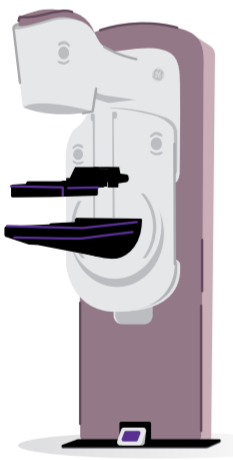
1987



GE HealthCare acquires Compagnie Générale de Radiologie* (CGR)

Mammography machines that follow the Senographe remain the standard of care for breast cancer screening.

2016



The first mammography system designed for improved patient experience

GE HealthCare unveils a new mammography experience with the Senographe Pristina™ designed in collaboration with radiologists, technologists and patients. Fast Company's "Most Innovative Companies in Biotech" Award (2017)

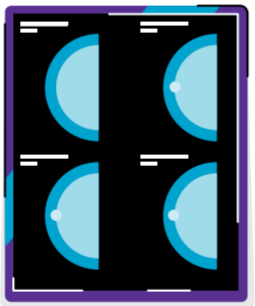
2012-2014



Improving the patient experience

SensorySuite focuses on the reasons why women avoid mammography, SensorySuite to stimulate a woman's senses to distract her from the perceived discomfort, pain, and anxiety of a mammogram.

2013



Launch of 3D mammography

3D mammography, also called Digital Breast Tomosynthesis, is a three-dimensional imaging technology that provides a clearer view through the over-lapping structures of breast tissues. GE HealthCare's SenoClaire™ is introduced in 2013.

2010



Launch of contrast-enhanced mammography (CEM)

SenoBright™ CEM produces contrast-enhanced images of the breast using an X-Ray contrast agent and two different X-Ray energy levels to help localize lesions.

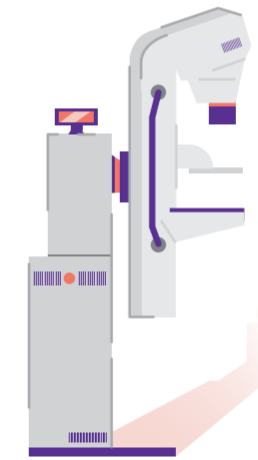
2000



A new era: digital mammography

GE HealthCare's Senographe 2000D, a full-field digital mammography system, is introduced.

1990



Improved image quality

Especially for dense and thick breasts. GE HealthCare's Senographe DMR automatically adjusts acquisition parameters based on the X-ray transmission through the breast.

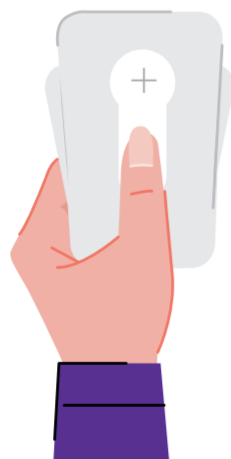
2016



The one stop clinic

GE HealthCare partners with Gustave Roussy Cancer Campus of France to develop the One Stop Clinic dedicated to providing same-day breast diagnoses and treatment plans.

2017



Introducing patient-assisted mammography compression

Pristina Dueta™: An industry first, patient-assisted compression device, guided by a technologist, that gives patients a sense of control during their mammograms. Time Magazine "Best Inventions" Award (2019)

2019



Introduction of AI to GE HealthCare mammography

GE HealthCare together with iCAD® introduce ProFound AI® for high-performing, concurrent-reading workflows.

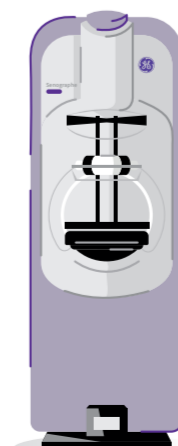
2020



Introduction of contrast-enhanced guided biopsy

Serena Bright™: An industry first, contrast-enhanced guided biopsy is introduced enabling clinicians to conduct breast biopsy exams with contrast guidance using the same mammography equipment.

2024



Introducing a new effortless mammography exam

GE HealthCare presents Pristina Via™, a system engineered to simplify exams for technologists/radiographers. With reduced steps and minimized wait times, Pristina Via enhances efficiency and supports precise imaging for confident diagnostics.

What's next?

* General Radiology Company, French joint-stock company founded in 1913, specializing in the manufacture and sale of X-ray equipment and for all applications of electricity, electronics, and mechanics.
© 2025 GE HealthCare. Senographe, SenoClaire, SenoBright, Senographe Pristina, Pristina Dueta, Serena Bright and Pristina Via are trademarks of GE HealthCare.
GE is a trademark of General Electric Company used under trademark license.
JB32456XX