



Versana Premier™ for MSK



Helping more clinicians flex their ultrasound muscles


Musculoskeletal (MSK) ultrasound is one of the most common types of scans being integrated into non-traditional environments, such as primary care practices.¹ As more clinicians seek to offer MSK scans, they need a system that is easy to use and offers optimal image clarity for maximum diagnostic confidence.

Versana Premier ultrasound system is leading the way to improve treatment outcomes and increase ultrasound accessibility for new users. Equipped with a suite of image optimization and workflow features, Versana Premier is designed to effortlessly offer optimal scan quality, reduce learning curves, and put the power of MSK scans into more new users' hands.




Clarity equals confidence


-  **VisionBoost Architecture** imaging engine offers best-in-class probe technology and display capabilities.
-  **Whizz clinical features** lets users optimize images in real time while scanning, while **Whizz Color Flow** quickly enhances or suppresses color signals to get deeper, more confident imaging of historically problematic areas.




60% of users think Whizz could improve their diagnostic confidence.²



91% of users agree Whizz provides good image quality.²





-  **Needle Recognition Software** provides precise and accurate display of the needle, anatomy and real-time guidance.

Unlock new potential with our versatile probe

-  The new **XDClear™ L4-20t-RS** probe supports a wide range of clinical applications, offering exceptional versatility and high-resolution imaging capabilities of superficial structures that enhance diagnostic accuracy and improve patient outcomes. Additional probes designed for MSK include: C1-5-RS, 4C-RS, 8C-RS, L8-18i-RS, L3-12-RS, 12L-RS, 9L-RS, L6-12-RS






Simplicity meets certainty

-  Seamlessly transition between Smooth Mode and Sharp Mode to view image features according to your preference with **Whizz Easy Style**.
-  See a broader field of view in the far field without having to switch to a convex transducer with **Virtual Convex**, enable panoramic imaging by moving the probe longitudinally along a structure using **LOGIQView**, and get a full-screen view of the desired scan region with **V-Zoom**.
-  Maximize your efficiency and train new users with built-in reference and guidance tools, including **Scan Assistant**, **Scan Coach** now for MSK imaging of the knee, shoulder, and wrist, and **Scan Coach Voice Comments**.
-  **Whizz clinical features** have resulted in 38% faster workflow² while new-on-console, one-button features like **Assistant**, create even more opportunities for speed and convenience.

“*Power Doppler Imaging helps reduce diagnostic uncertainty in cases where tissue looks fine but there’s increased or abnormal blood flow. I’ve also found the Needle Recognition software and Whizz imaging features incredibly helpful in teaching and procedural contexts.*”

– **Dr. Ian Thomas**
Owner of Thomas Sports and Regenerative Orthopedics

Enable a more definitive diagnosis

-  **B-Flow**, **B-Flow Color**, and **Power Doppler Imaging** help enable quicker detection of potentially serious diagnoses by assessing inflammation or soft tissue neoplasms.
-  Characterize structures to gain more conclusive imaging of hard and soft lesions using **Strain Elastography**.
-  Quickly and confidently assess progression of conditions by comparing past and present scans using the **Follow-Up Tool**.

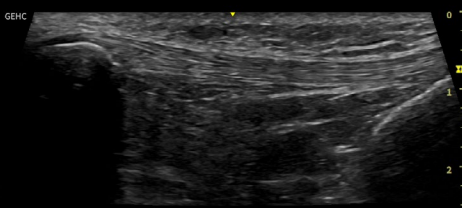
“*Versana Premier is easy to use as someone who does not only MSK ultrasound, but also POCUS. It was very helpful for me.*”

– **Dr. Ian Thomas**
Owner of Thomas Sports and Regenerative Orthopedics

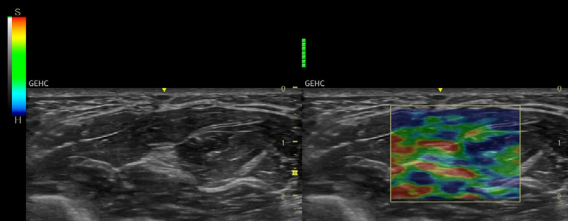
New release, same reliability

While the new Versana Premier comes with a variety of imaging and workflow updates for MSK, it offers the same robust education, support, and service resources on which GE HealthCare customers have come to rely, including:

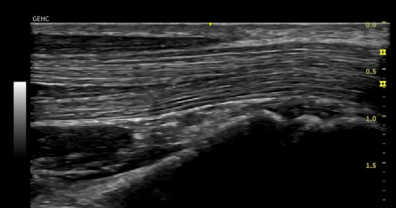
- ✓ Web-based peer-to-peer learning resources with the Versana Club
- ✓ Expert support during and after purchase
- ✓ In-depth staff product training
- ✓ Remote and on-site technical, clinical, and network support



L3-12-RS knee with Virtual Convex



L3-12-RS wrist with Strain Elastography



L4-20t-RS wrist

 Explore MSK ultrasound for your practice with the new Versana Premier

- Zumstein, N., Merlo, C., Essig, S., Auer, R., Tal, K., & Hari, R. (2024). The use of diagnostic ultrasound by primary care physicians in Switzerland – a cross-sectional study. *BMC Primary Care*, 25(1). <https://doi.org/10.1186/s12875-024-02491-5>.
- GE HealthCare-sponsored usability study, using Whizz. Study was conducted in December 2022. JB24263XX

Dr. Thomas is a paid consultant for GE HealthCare and was compensated for participation in this sell sheet. The statements by Dr. Thomas described here are based on his own opinions and on results that were achieved in his unique setting. Since there is no “typical” hospital and many variables exist, i.e. hospital size, case mix, etc., there can be no guarantee that other customers will achieve the same results.

Products mentioned in the material may be subject to government regulations and may not be available in all countries. Shipment and effective sale can only occur after approval from the regulator. Please check with local GE HealthCare representative for details.

© 2025 GE HealthCare.

Versana Premier and XDClear are trademarks of GE HealthCare. GE HealthCare is a trademark of General Electric Company used under trademark license.

June 2025
JB33179XX

