



Precision meets flexibility

Now, you can have both. The precision of cardiac PET over SPECT joins the flexibility enabled by Flyrcado to increase access, diagnostic accuracy, and options for your cardiac imaging team.¹⁻⁶

Explore how Flyrcado can bring cardiac PET to more of your patients

More access in more places with on-demand doses delivered up to five days a week^{2,3,6}

Superior diagnostic accuracy—even in challenging-to-image patients^{*1,5}

The operational flexibility enabled by the longest half-life of any cardiac tracer^{1-3,6}



Please see page 6 for Flyrcado Important Safety Information and the full [Prescribing Information here](#).

*When compared to SPECT

1. Flyrcado (flurpiridaz F 18 injection). Full Prescribing Information. Marlborough, MA: GE HealthCare. 2. Patel KK, Singh A, Bateman TM. The potential of F-18 flurpiridaz PET/CT myocardial perfusion imaging for precision imaging. *Curr Cardiol Rep.* 2022;24(8):987-994. 3. Driessen RS, Raijmakers PG, Stuijzand WJ, Knaapen P. Myocardial perfusion imaging with PET. *Int J Cardiovasc Imaging.* 2017;33(7):1021-1031. 4. Bourque JM. Cardiac PET perfusion imaging: AURORA lights the way to a new era. *J Am Coll Cardiol.* 2023;82(16):1611-1613. 5. Maddahi J, Agostini D, Bateman TM, et al. Flurpiridaz F-18 PET Myocardial perfusion imaging in patients with suspected coronary artery disease. *J Am Coll Cardiol.* 2023;82(16):1598-1610. 6. Maddahi J, Packard RRS. Cardiac PET perfusion tracers: current status and future directions. *Semin Nucl Med.* 2014;44(5):333-343.



GE HealthCare

More access

Flyrcado can bring cardiac PET to more sites across your network¹⁻³

With delivery of on-demand unit doses up to five days a week, Flyrcado opens the door to cardiac PET for more imaging centers.^{1,4-6}

With Flyrcado, your site of care:



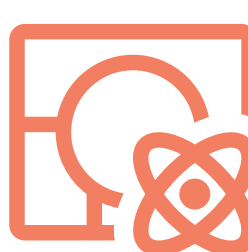
Gains access to greater CAD diagnostic certainty proven versus SPECT in overall population^{4,5}



Gets the doses you need when you need them—no patient volume minimums^{1,2,6}



Gains the convenience of per-unit dose pricing, without the high fixed costs from generators and cyclotrons—or schedules that wait on mobile generators^{1,2,6}



Is freed from the complexity of on-site tracer production and associated staff training^{1,6}



May bring cardiac PET imaging closer to home for more patients¹⁻³

Flyrcado makes it possible.

1. Patel KK, Singh A, Bateman TM. The potential of F-18 flurpiridaz PET/CT myocardial perfusion imaging for precision imaging. *Curr Cardiol Rep* . 2022;24(8):987-994. **2.** Driessen RS, Raijmakers PG, Stuijzand WJ, Knaapen P. Myocardial perfusion imaging with PET. *Int J Cardiovasc Imaging* . 2017;33(7):1021-1031. **3.** Bourque JM. Cardiac PET perfusion imaging: AURORA lights the way to a new era. *J Am Coll Cardiol*. 2023;82(16):1611-1613. **4.** Flyrcado (flurpiridaz F 18 injection). Full Prescribing Information. Marlborough, MA: GE HealthCare. **5.** Maddahi J, Agostini D, Bateman TM, et al. Flurpiridaz F-18 PET Myocardial perfusion imaging in patients with suspected coronary artery disease. *J Am Coll Cardiol*. 2023;82(16):1598-1610. **6.** Maddahi J, Packard RRS. Cardiac PET perfusion tracers: current status and future directions. *Semin Nucl Med*. 2014;44(5):333-343.



Diagnostic accuracy

Cardiac PET MPI with Flyrcado delivers superior diagnostic accuracy over SPECT

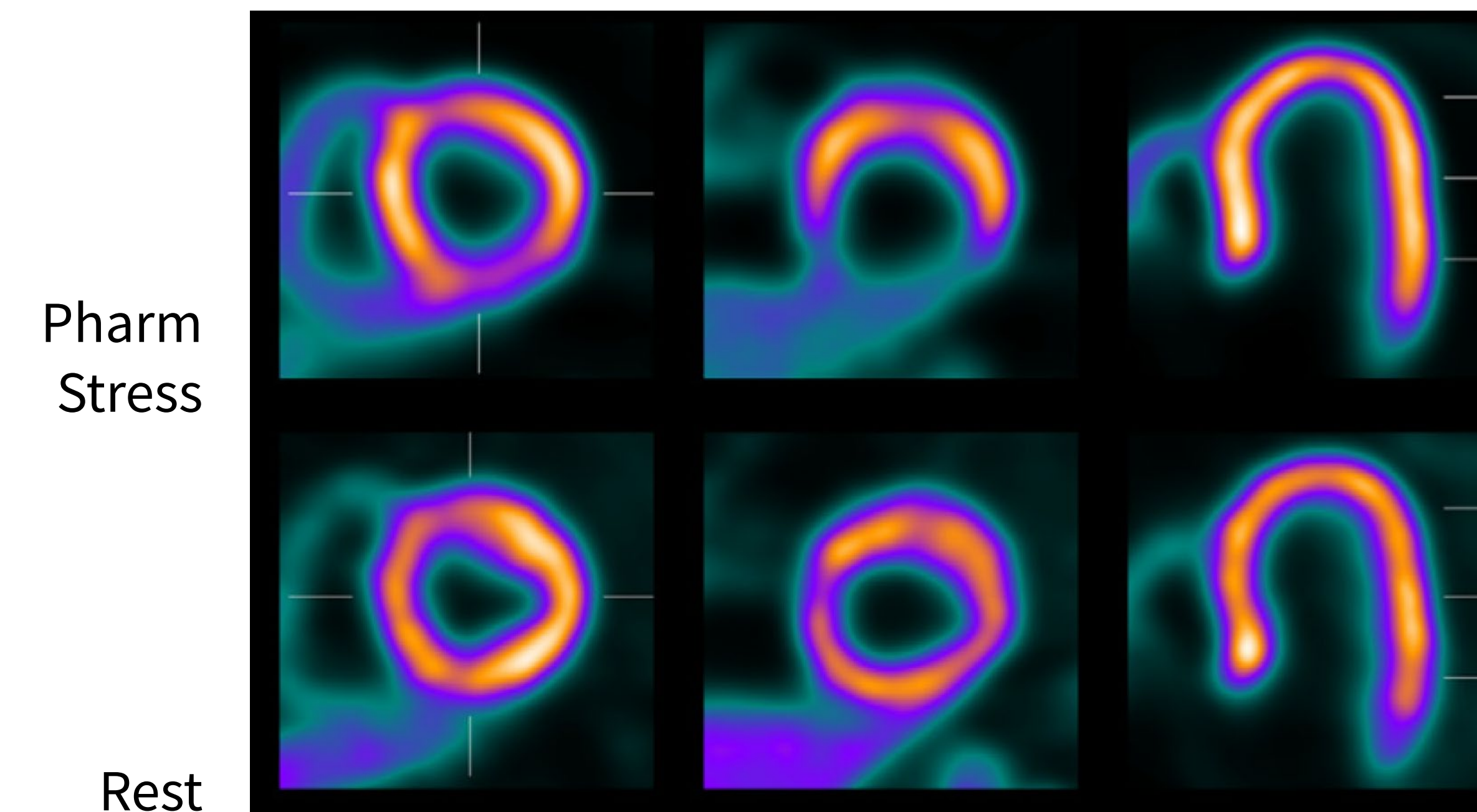
SPECT has limits—especially when it comes to exercise stress testing and challenging-to-image patients.^{1,2}

Now, with high spatial resolution, higher uptake in the myocardium and better image contrast, and improved detection of subtle defects over SPECT, cardiac PET MPI with Flyrcado delivers superior imaging quality for precise diagnosis and prognostic value of CAD.*^{1,4}

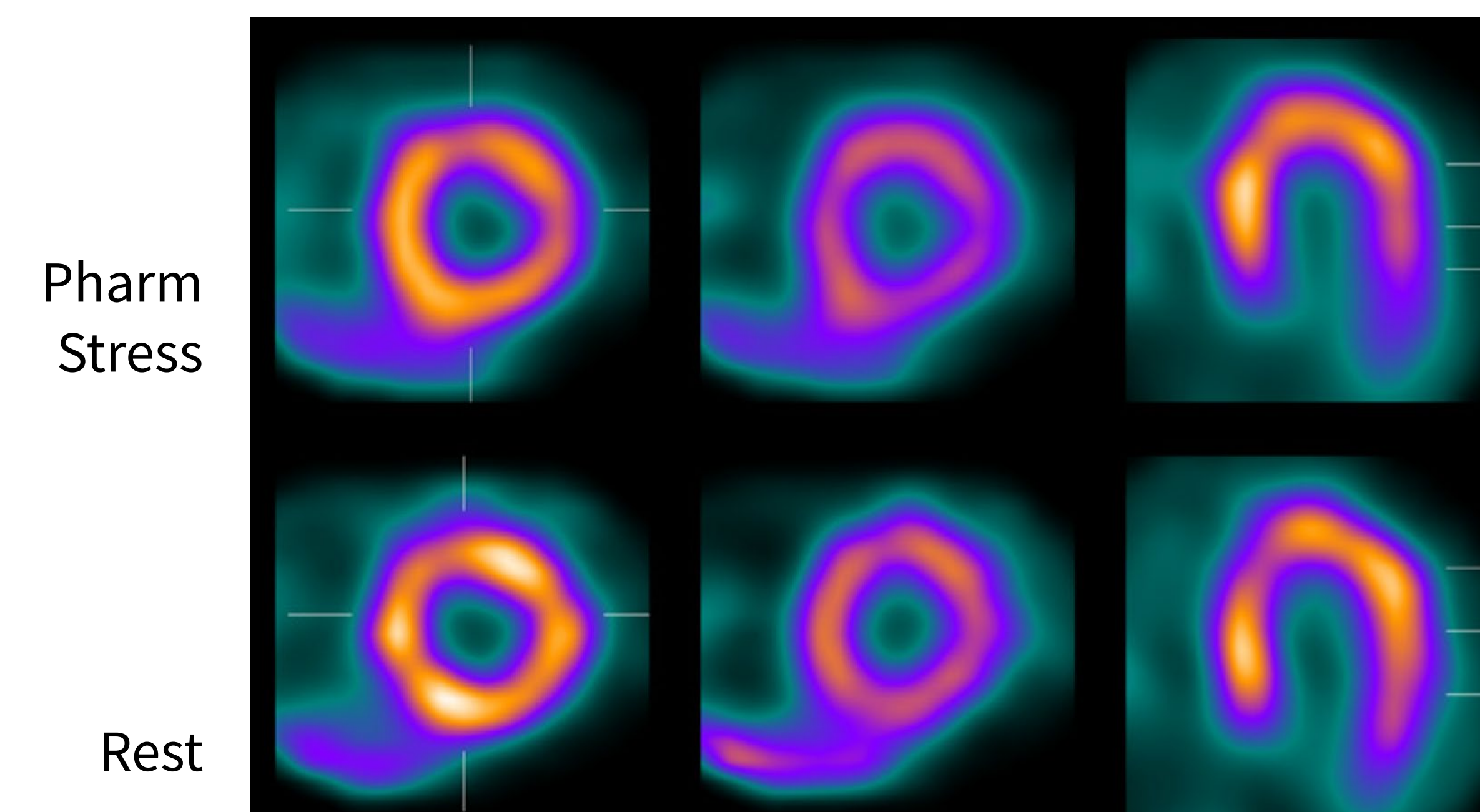
**THE FIRST NEW
cardiac PET
radiotracer in
OVER 20 YEARS**

Results from two large clinical trials[†] demonstrate the superior sensitivity and non-inferior specificity of Flyrcado over SPECT in detecting coronary artery disease (CAD)^{1,2}

Flyrcado PET MPI²



Tc^{99m}Sestamibi SPECT MPI²



*When compared to SPECT

†The approval was supported by data from 2 prospective, open-label clinical trials in adults with either suspected CAD (Study 1; ClinicalTrials.gov Identifier: NCT03354273) or known or suspected CAD (Study 2; ClinicalTrials.gov Identifier: NCT01347710).

1. Flyrcado (flurpiridaz F 18 injection). Full Prescribing Information. Marlborough, MA: GE HealthCare. 2. Maddahi J, Agostini D, Bateman TM, et al. Flurpiridaz F-18 PET Myocardial perfusion imaging in patients with suspected coronary artery disease. *J Am Coll Cardiol.* 2023;82(16):1598-1610. 3. Patel KK, Singh A, Bateman TM. The potential of F-18 flurpiridaz PET/CT myocardial perfusion imaging for precision imaging. *Curr Cardiol Rep.* 2022;24(8):987-994. 4. Maddahi J, Packard RRS. Cardiac PET perfusion tracers: current status and future directions. *Semin Nucl Med.* 2014;44(5):333-343.

Diagnostic accuracy

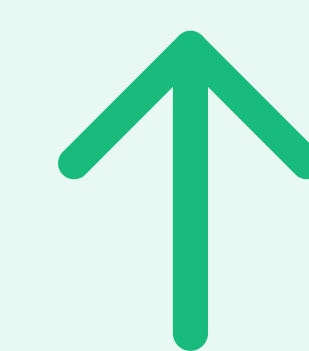


Flyrcado increases diagnostic certainty for more patients^{*1,2}

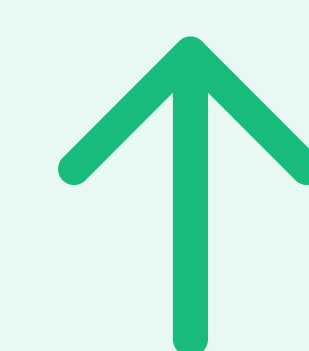
With Flyrcado, the precision of cardiac PET extends to patients who may be challenging to image due to their body type or clinical implications of diagnostic errors.^{3,4}

Are your patients in these cohorts?

- Patients with BMI over 35
- Women with dense breast tissue or breast implants
- Patients with diabetes
- Patients with multivessel CAD and microvascular disease
- Patients symptomatic with an intermediate to high probability for CAD
- Higher-risk patients for whom diagnostic errors carry greater clinical implications:
 - Patients with CKD, DM, left main, MVD, proximal LAD lesions, etc.
 - Younger patients with established CAD due to consideration for repeat radiation exposure



Flyrcado was associated with **significantly higher diagnostic certainty** (84.9%) over SPECT (52.1%; $P < 0.0001$)²



Sensitivity was also significantly higher compared to SPECT in **women-only subgroups and patients with BMI over 30**²

40% of US women ages 40-74 have dense breast tissue or breast implants³⁻⁵

46% of US adults ages 40-59 have a BMI over 35^{2,4,6}

29% of US adults age 65+ live with diabetes⁷

*When compared to SPECT

1. Flyrcado (flurpiridaz F 18 injection). Full Prescribing Information. Marlborough, MA: GE HealthCare. 2. Maddahi J, Agostini D, Bateman TM, et al. Flurpiridaz F-18 PET Myocardial perfusion imaging in patients with suspected coronary artery disease. *J Am Coll Cardiol.* 2023;82(16):1598-1610. 3. Schindler TH, Bateman TM, Berman DS, et al. Appropriate use criteria for PET myocardial perfusion imaging. *J Nucl Med.* 2020;61(8):1221-1265. 4. Bateman TM, Dilsizian V, Beanlands RS, DePuey EG, Heller GV, Wolinsky DA. American Society of Nuclear Cardiology and Society of Nuclear Medicine and Molecular Imaging Joint Position Statement on the Clinical Indications for Myocardial Perfusion PET. *J Nucl Med.* 2016;57(10):1654-1656. 5. Sprague BL, Gangnon RE, Burt V, et al. Prevalence of mammographically dense breasts in the United States. *J Natl Cancer Inst.* 2014;106(10):dju255. 6. U.S. Centers for Disease Control and Prevention. NCHS Data Brief. 2024; 508. Accessed December 17, 2024. <https://www.cdc.gov/nchs/data/databriefs/db508.pdf>. 7. U.S. Centers for Disease Control and Prevention. National diabetes statistics report. CDC. Published May 15, 2024. Accessed March 13, 2025. <https://www.cdc.gov/diabetes/php/data-research/index.html>.

Operational flexibility

Advance your imaging center with the flexibility of Flyrcado's 109-minute half-life^{1,2}

With a half-life over 82x longer than Rubidium, Flyrcado gives your team a full 109 minutes to accommodate the needs of clinical practice in cardiac imaging centers.^{2,3}

Flyrcado's significantly longer half-life enables:

- ✓ **Exercise stress testing** in cardiac PET imaging^{1,2}
- ✓ **All-day scheduling** with an 8-hour shelf life²
- ✓ **Managing unexpected delays** due to generator malfunction, failed QC, patient repositioning, and replacement time^{1,3}
- ✓ **Re-imaging**, if needed, during the same appointment, without additional dosing or radiation exposure*^{1,2}

*Allows for repeat imaging (static imaging, not dynamic) within 30-40 minutes from injection in the event of technical difficulties (eg, patient motion), without additional dosing or radiation exposure.

1. Patel KK, Singh A, Bateman TM. The potential of F-18 flurpiridaz PET/CT myocardial perfusion imaging for precision imaging. *Curr Cardiol Rep.* 2022;24(8):987-994. 2. Flyrcado (flurpiridaz F 18 injection). Full Prescribing Information. Marlborough, MA: GE HealthCare. 3. Driessen RS, Raijmakers PG, Stuijzand WJ, Knaapen P. Myocardial perfusion imaging with PET. *Int J Cardiovasc Imaging.* 2017;33(7):1021-1031.



“A game changer.”

—Flyrcado clinical trials principal investigator Jamshid Maddahi, MD, FACC, MASNC, UCLA School of Medicine, director, Biomedical Imaging Institute

Be Flyrcado Forward



Sign up now for continued guidance and resources to expand access to cardiac PET for your patients. Flyrcado is available through GE HealthCare's expanding contract manufacturing organization (CMO) partner network.

Questions about reimbursement for Flyrcado? Connect to our market access team at ACC.

Visit [gehealthcare.com/flyrcado-pi](https://www.gehealthcare.com/flyrcado-pi) for full Prescribing Information

Important Safety Information



Indications and Usage

FLYRCADO is a radioactive diagnostic drug indicated for positron emission tomography (PET) myocardial perfusion imaging (MPI) under rest or stress (pharmacologic or exercise) in adult patients with known or suspected coronary artery disease (CAD) to evaluate for myocardial ischemia and infarction.

Contraindications

None

Warnings and Precautions

Risk associated with exercise or pharmacologic stress: Patients evaluated with exercise or pharmacologic stress may experience serious adverse reactions such as myocardial infarction, arrhythmia, hypotension, bronchoconstriction, stroke, and seizure. Perform stress testing in the setting where cardiac resuscitation equipment and trained staff are readily available. When pharmacologic stress is selected as an alternative to exercise, perform the procedure in accordance with the pharmacologic stress agent's prescribing information.

Radiation risks

FLYRCADO contributes to a patient's overall long-term cumulative radiation exposure. Long-term cumulative radiation exposure is associated with an increased risk of cancer. Ensure safe handling to minimize radiation exposure to patients and health care providers. Advise patients to hydrate before and after administration and to void.

Adverse Reactions

Most common adverse reactions occurring during FLYRCADO PET MPI under rest and stress (pharmacologic or exercise) (incidence $\geq 2\%$) are dyspnea, headache, angina pectoris, chest pain, fatigue, ST segment changes, flushing, nausea, abdominal pain, dizziness, and arrhythmia.

To report SUSPECTED ADVERSE REACTIONS, contact GE HealthCare at 800-654-0118 (option 2 then option 1) or by email at GPV.drugsafety@gehealthcare.com or FDA at 800-FDA-1088 or www.fda.gov/medwatch

© 2025 GE HealthCare

Flyrcado is a trademark of GE HealthCare.

GE is a trademark of General Electric Company used under trademark license.

March 2025 | JB11490US