

# What's in this release?

## Venue family R5 updates



# Get ahead: Venue Sprint sets the pace

## Powerful Venue family software plus wireless flexibility

Healthcare professionals who demand more than just portability are going to love Venue Sprint, the newest member of the Venue family. With the addition of this all-in-one entry level solution that combines the sterility, mobility and flexibility of wireless probes with powerful tools that simplify advanced exams, the trusted Venue family software can now go everywhere. Experience the freedom and confidence to provide care where it's needed and unlock more potential.



Easily maneuverable cart  
with built-in charging while  
you're on the move.

## Now everywhere is point of care



### **Advanced clinical capabilities**

Equipped with the latest Venue family software with AI-enabled features and auto tools.

### **Ultimate portability**

Designed for easy maneuverability wherever you need to deliver care, fitting into tight spaces.

### **Operational flexibility**

Compatible with wireless Vscan Air™ probes to help you go anywhere with an elevated Venue family software experience.

# New probes for Venue systems

## Wireless probe connectivity

Wireless probe capability has now come to the entire Venue family, delivering portability, accessibility and cleanability advantages with Venue family software's smart workflow and AI tools. This means you have the flexibility and mobility to bring the power of the Venue software anywhere. Sync up and you're ready to go!



## Deeper scanning with XDclear curved probe

### C2-9-RS Wide Band Convex

✓ **Applications:**  
Musculoskeletal Conventional, Nerve Block, Pediatric/Neonatal, Vascular/Peripheral Vascular

📶 **Probe frequency range:**  
2.1 – 11.9 MHz

👁️ **Field of view:**  
63°

Now, an additional exceptional XDclear™ probe is compatible with Venue, Venue Go and Venue Fit. This curved probe with XDclear technology delivers powerful high fidelity and wide bandwidth for impressive deep penetration and high resolution. The C2-9-RS allows for deeper scanning and enables a better fit for some windows while scanning. With a higher frequency, the imaging from this ergonomic probe delivers an enhanced image resolution. Excellent for use with smaller adults and larger children.



**XDclear probes deliver powerful high fidelity and wide bandwidth for impressive deep penetration and high resolution.**

# Additional clinical tools

## ▶▶ Bladder Volume Tool

This simplified workflow tool features reference images as guidance and supports clinicians in calculation of the bladder volume. The tool is designed to guide bladder volume measurements to make them simple and fast.

## 📌 Auto Volume Flow

Use the auto measurement to calculate the brachial or radial artery flow volume in real time for dialysis procedure preparation. It assists the clinician in calculating the arterial flow volume in real-time (based on vessel diameter and PW spectral doppler flow measurement).

## 👉 Venue Coach MSK

This easy-to-use exam documentation tool assists users through exams by providing reference images and anatomy markups.

Multiple anatomical areas and helpful video tutorials help clinicians to acquire the scans they need.

Focus areas include:

- Shoulder
- Knee
- Hip
- Elbow
- Wrist/Hand
- Ankle/Foot



## Caption Guidance™ for cardiac imaging

An option on the Venue family, Caption Guidance helps you to acquire quality cardiac ultrasound images. Thanks to AI-driven software, even new ultrasound users can capture cardiac images successfully. Real-time, turn-by-turn, on-screen guidance prompts your probe movements to help capture a diagnostic quality image.

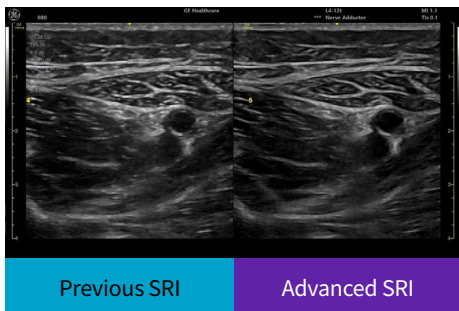
# Continuous improvement

## Presets tuning

Delivers more optimized and enhanced image quality from head to toe, including common exams like abdominal, cardiac and MSK.

## New advanced SRI

Enables a smoother, more improved image by producing clear borders and reduced speckle while maintaining natural image texture.



## TGC stores to preset

Helps save you time by creating a more consistent workflow by allowing you to save TGC settings and commonly used presets.

## Better color presentation

Gives a more realistic and accurate presentation of color by improving PDI+, adding PDI+ to certain presets and optimizing cardiac color flow.



# Venue Family lifecycle solutions

## System Health Dashboard

System Health Dashboard can assist in securing reliable system performance and reduce downtime. It helps teams by showing the status of key subsystems, sending intelligent alerts, diagnostics for connected probes, preventive management abilities and optional remote access availability.

## MyGEHealthCare

An online, hassle-free way to manage your equipment and fleet information, MyGEHealthCare provides a one-stop-shop experience to access proactive insights and manage service support—anytime, anywhere.

## Imaging Insights

A multi-modality, vendor-neutral solution that helps with imaging operations, Imaging Insights provides actionable insights with a focus on operation efficiency, clinical excellence and financial growth. It combines analytics and customer advisory services to help department management teams achieve their value-based imaging transformations.

## Software eDelivery

Software eDelivery can help with workload management by allowing you to schedule updates at your convenience—featuring 100% secure remote delivery that also gives you 24/7 access to the latest updates. You'll also have the most recent security patches for maximum cyber protection (via proactive notifications).

## InSite™ on-demand remote support

Expert support wherever you are, InSite connectivity enables on-demand and real-time access to GE HealthCare experts. This on-demand remote support reduces disruptions, decreases system downtime and improves asset usage and staff productivity.

## EZ Config Wizard

Automatically starting at first bootup of your device for a smooth, seamless process, EZ Config Wizard covers all aspects of a complete configuration of a device and allows you to start scanning right away. Fitting into your busy schedule, it guides you step-by-step through an easy-to-follow installation with tips and hints to optimize the process and make it user-friendly.

# Work smarter with ViewPoint™ 6 improvements

The latest Venue release includes updates to ViewPoint 6 ultrasound reporting software to streamline your workflow.

## Workflow improvements

- **Work faster with Direct Send**  
Direct Send functionality allows clinicians to finalize reports directly on Venue family systems. On-board reports can also be reviewed and updated directly on your Venue family systems for added efficiency.
- **Take ViewPoint 6 reporting further**  
Bring excellence and efficiency to your Venue ultrasound workflow with the latest reporting capabilities. Users now have the ability to configure ViewPoint 6 templates for Venue on-board reporting.

## IT improvements

- **Enhanced security and easier installation** with no more shared folders.
- **Fortified password policies**, including configurable and non-configurable options.
- **Secured DICOM™ communication through TLS Encryption**
  - Encrypted transfer of DICOM data at each stage to prevent unauthorized data access.
  - TLS Encryption is enabled by default, ensuring secure transfer of images and measurements.
  - Separate configuration for PACS communication.

## About GE HealthCare Technologies Inc.

GE HealthCare is a leading global medical technology, pharmaceutical diagnostics, and digital solutions innovator, dedicated to providing integrated solutions, services, and data analytics to make hospitals more efficient, clinicians more effective, therapies more precise, and patients healthier and happier. Serving patients and providers for more than 125 years, GE HealthCare is advancing personalized, connected, and compassionate care, while simplifying the patient's journey across the care pathway. Together our Imaging, Ultrasound, Patient Care Solutions, and Pharmaceutical Diagnostics businesses help improve patient care from diagnosis, to therapy, to monitoring. We are an \$19.6 billion business with approximately 51,000 colleagues working to create a world where healthcare has no limits.

Follow us on [LinkedIn](#), [X](#) (formerly Twitter), and [Insights](#) for the latest news, or visit our website <https://www.gehealthcare.com/> for more information.

GE HealthCare is a leading global medical technology innovator dedicated to providing integrated solutions to make clinicians more effective, therapies more precise, and patients healthier.

Products mentioned in the material may be subject to government regulations and may not be available in all countries. Shipment and effective sale can only occur after approval from the regulator. Please check with local GE HealthCare representative for details.

©2024 GE HealthCare. Venue Sprint, Venue Fit, Venue Go, Venue, Vscan Air, XDclear, Caption Guidance, InSite, ViewPoint and DICOM are trademarks of GE HealthCare. GE is a trademark of General Electric Company used under trademark license.

August 2024  
JB29281XX



GE HealthCare