



Digital Expert Connect:

Virtual Connections.
Anywhere. Anytime.

The way OBGYN clinicians deliver care has changed – cases are more complex, exam workloads are increasing, and efficiency has become essential.

Digital Expert Connect is a collaboration tool to help you confidently and efficiently deliver care to your patient.



Digital Expert Connect can help you:



Increase Confidence*

- Easily access colleagues virtually to collaborate
- With all views available, the sonographer can capture necessary images
- Available real-time, before or after a patient exam



Increase Exam Quality

- Can be used as a remote coaching tool to ensure all users are trained to the same standard



Enhance Patient Experience

- The ability to help reduce patient call-backs by eliminating incomplete exams



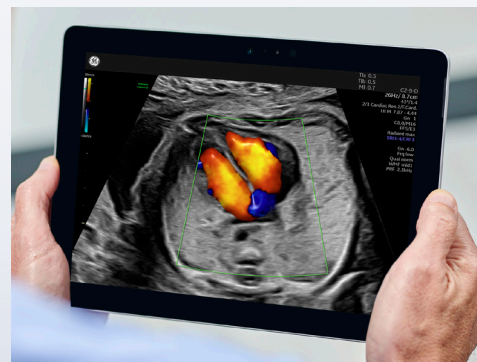
Maximize Technology Investment

- Receive training on how to optimize the imaging features available on your Voluson™ system
- Allows the flexibility to train at your own pace



Easy To Connect

1. Connect Digital Expert tablet to Voluson ultrasound system using a cable
2. Collaborator opens up Digital Expert app on any device – smartphone, tablet or desktop computer
3. Click one button to connect with user requesting assistance



Digital Expert Connect Includes:

- Microsoft® Surface Go family tablet with Intel® Core™ m3 8100Y at 1.1-3.4 GHz (or better) with Digital Expert Connect software
- Video interface hardware and cable

Collaborator Computer Requirement

- Microsoft Windows®-based tablets, desktops, and laptops
- Recommended CPU Intel i3 or better, speed 1.70 GHz or higher

*Digital Expert is not for diagnostic use.

© 2022 General Electric Company.

GE Healthcare reserves the right to make changes in specifications and features shown herein, or discontinue the product described at any time without notice or obligation. Contact your GE Healthcare representative for the most current information. GE, the GE Monogram and Voluson are trademarks of General Electric Company. Windows and Microsoft are registered trademarks of Microsoft Corporation. GE Healthcare, a division of General Electric Company. GE Medical Systems, Inc., doing business as GE Healthcare. All other third party trademarks are the property of their respective owners.

October 2022
JB21859XX

Key Features

- Audio/video capabilities
- Screen sharing
- Live annotation
- Instant messaging and on-screen chat

